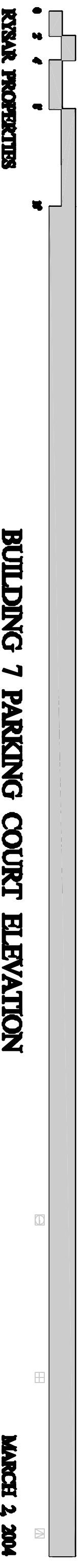


PARKING SUMMARY:	
'A' UNITS (19):	2-CAR GARAGE + 2 DRIVE SPACES
'F' UNITS (6):	2-CAR GARAGE + 2 DRIVE SPACES
'1-F' UNITS (12):	1-CAR GARAGE + 1 DRIVE SPACE
OVERFLOW:	18 SPACES
TOTAL:	142 SPACES 3.84 SPACES / UNIT

NOTE: VARIANCE REQUIRED AT SIDYARD SETBACK FOR UNIT 1 AND AT REAR YARD FOR UNIT 12.

PROJECT STATISTICS:	
SITE AREA:	4.94 ACRES
UNIT COUNT:	37 UNITS TOTAL • 18 UNITS W/ FIRST-FLOOR MASTERS • 12 UNITS W/ 1-CAR GARAGE
	'F' DENOTES FIRST-FLOOR MASTER SUITE + TWO CAR GARAGE
	'1-F' DENOTES FIRST-FLOOR MASTER SUITE + SINGLE CAR GARAGE

STONES THROW



BUILDING 7 PARKING COURT ELEVATION

MARCH 2, 2004

KYSAR PROPERTIES